

# The Perfect Match

Pepperl+Fuchs' H-System for EcoStruxure™  
Triconex® by Schneider Electric

Pepperl+Fuchs' Intrinsic Safety Termination  
Board Solutions customized for Tricon CX

[www.schneider-electric.pepperl-fuchs.com](http://www.schneider-electric.pepperl-fuchs.com)

Technology  
Partner

Schneider  
Electric



Your automation, our passion.

**pf** PEPPERL+FUCHS

# Partnering for the Ultimate in Safety and Success

Schneider Electric's ongoing partnership with Pepperl+Fuchs has provided yet another standard in industry safety, following the great success and wide acceptance of the Tricon solution over the past years. Pepperl+Fuchs' H-System for Tricon CX is a fully tested and preferred solution. The space-saving H-System barriers and termination boards provide the densest solution in the market when space for intrinsic safety barriers is a critical issue.



Termination boards are available with intrinsically safe wiring terminals and a Triconex-specific ELCO or D-Sub plug connector to standardize the cabinet layout and maximize spacing.



HiC modules snap onto termination boards using a plug & lock installation, requiring no tools or wiring. The narrow interface provides the highest possible signal density while low power dissipation keeps the cabinet cool.

## H-System Intrinsic Safety Modules for EcoStruxure™ Triconex® - Tricon CX

- HiC modules with just 12.5 mm width, providing maximum cabinet space savings
- Single-channel HiC modules for single-loop integrity
- Dual-channel HiC modules for greater density and savings
- Customized termination board with specific ELCO or D-Sub connectors and H-System intrinsic safety modules for Triconex Tricon CX I/O safety system
- The prewired termination board using Tricon system cables, keeps planning and wiring to a minimum

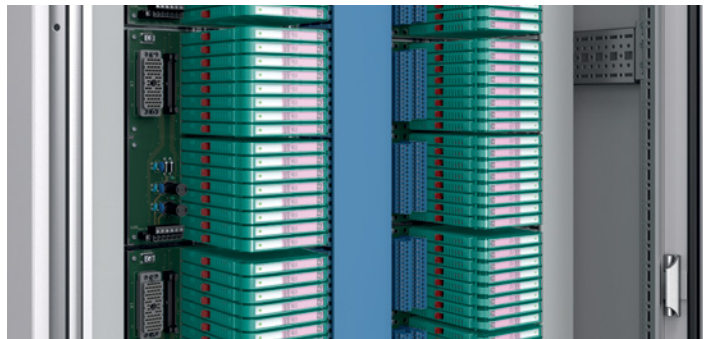
## Plug and play—for every process control system

Pepperl+Fuchs' H-System isolated intrinsic safety barriers for EcoStruxure™ Triconex® - Tricon CX plug into customized termination boards.

The termination boards contain the appropriate plug-in ELCO- or Sub D-connector for the new Tricon CX. H-System is the most thoroughly tested and documented intrinsic safety solution for a DCS or ESD system. This extensive testing ensures the ultimate in safety, reliability, and confidence in your hazardous location ESD. Customized termination board solutions also available for EcoStruxure™ Triconex® - Tricon and Foxboro DCS. The H-System is globally certified and supported and offers the only universal barrier solution for both safety and control.

## Schneider Electric and Pepperl+Fuchs—Partners in Industrial Automation

Schneider Electric, worldwide specialist in energy management and industrial automation, and Pepperl+Fuchs, global explosion protection technology expert, have enjoyed a partnership for more than 30 years. As part of the Technology Partner Program (TPP), Pepperl+Fuchs also offers a complete range of automation solutions for Schneider Electric's EcoStruxure™ and the process automation industry.



Redefining termination board technology

## A Seamless Portfolio

As a partner with Schneider Electric, Pepperl+Fuchs serves as the main vendor for:

- Intrinsic safety galvanic isolators
- Signal conditioners
- HART multiplexer solutions
- FOUNDATION Fieldbus
- PROFIBUS
- Purge and pressurization
- Special-purpose HMI solutions
- Intrinsically safe mobile devices



Triconex		Pepperl+Fuchs						
Tricon		Module				Termination Board		
Card	Channel	Type	Features	SIL	Channel	Type	Modules	Channel
<b>Digital Input</b>								
<b>3506X (32)</b>	<b>16 + 16</b>	HiC2821	RelayOut	SIL2	1	HICTB16-TRX-RAC-PL-DI16	16	16
		HiC2841	TransOut	SIL2	1		16	16
		HiC2831	TransOut, LFT	SIL2	1		16	16
		HiC2853	TransOut, LFT	SIL3	1		16	16
		HiC2822	RelayOut	SIL2	2	HICTB16-TRX-RAC-PL-DI32	16	32
		HiC2842	TransOut	SIL2	2		16	32
		HiC2832	TransOut, LFT	SIL2	2		16	32
<b>Digital Output</b>								
<b>3626X (32)</b>	<b>16 + 16</b>	HiC2871A	45mA @ 12VDC, Test P. Immunity	SIL3	1	HICTB16-TRX-RAC-PL-DO16	16	16
		HiC2883	45mA @ 12VDC, Test P. Immunity, LFT	SIL3	1		16	16
		HIC5861	Safety Relay DTS, Non-I.S., LFT	SIL3	1		16	16
		HIC5863	Safety Relay ETS, Non-I.S., LFT	SIL3	1		16	16
<b>Analog Input</b>								
<b>3722X/3723X (32)</b>	<b>16 + 16</b>	HiC2025		SIL2	1	HICTB16-TRX-RAC-PL-AI16	16	16
		HiC2025A	for Fire Detectors (I <sub>0</sub> = 93 mA)	SIL2	1		16	16
		HiC2025ES		SIL3	1		16	16
<b>Temperature Input</b>								
<b>3722X/3723X (32)</b>	<b>16 + 16</b>	HIC2081		SIL2	1	HICTB16-TRX-RAC-PL-AI16	16	16
<b>Analog Output</b>								
<b>use 3902X (16)</b>	<b>16</b>	HiC2031		SIL2	1	HICTB16-TRX-RAC-PL-IO16	16	16
		HIC2031ES		SIL3	1		16	16
<b>Universal Input/Output</b>								
<b>3902X (16)</b>	<b>16</b>	HiC2441	Universal (AI, AO, DI, DO)	SIL2	1	HICTB16-TRX-RAC-PL-IO16	16	16
		HiC2025	AI	SIL2	1		16	16
		HiC2025A	AI, for Fire Detectors (I <sub>0</sub> = 93 mA)	SIL2	1		16	16
		HiC2025ES	AI	SIL3	1		16	16
		HiC2031	AO	SIL2	1		16	16
		HiC2031ES	AO	SIL3	1		16	16
		HiC2081	TI	SIL2	1		16	16
		HiC2821	DI, RelayOut	SIL2	1		16	16
		HiC2841	DI, TransOut	SIL2	1		16	16
		HiC2831	DI, TransOut, LFT	SIL2	1		16	16
		HiC2853	DI, TransOut, LFT	SIL3	1		16	16
		HiC2883	DO, 45mA @ 12VDC, Test P. Immunity, LFT	SIL3	1		16	16
		HiC2871A	DO, 45mA @ 12VDC, Test P. Immunity	SIL3	1		16	16
		HiC2873	DO, 40mA @ 12VDC, Test P. Immunity	SIL3	1		16	16
		HIC5861	Safety Relay DTS, Non-I.S., LFT	SIL3	1		16	16
		HIC5863	Safety Relay ETS, Non-I.S., LFT	SIL3	1		16	16

# Your automation, our passion.

## Explosion Protection

- Intrinsic Safety Barriers
- Signal Conditioners
- FieldConnex® Fieldbus
- Remote I/O Systems
- Electrical Ex Equipment
- Purge and Pressurization
- Industrial HMI
- Mobile Computing and Communications
- HART Interface Solutions
- Surge Protection
- Wireless Solutions
- Level Measurement

## Industrial Sensors

- Proximity Sensors
- Photoelectric Sensors
- Industrial Vision
- Ultrasonic Sensors
- Rotary Encoders
- Positioning Systems
- Inclination and Acceleration Sensors
- Fieldbus Modules
- AS-Interface
- Identification Systems
- Displays and Signal Processing
- Connectivity

Pepperl+Fuchs Quality  
Download our latest policy here:

[www.pepperl-fuchs.com/quality](http://www.pepperl-fuchs.com/quality)



[www.schneider-electric.pepperl-fuchs.com](http://www.schneider-electric.pepperl-fuchs.com)

[www.pepperl-fuchs.com](http://www.pepperl-fuchs.com)

Subject to modifications · © Pepperl+Fuchs

Printed in USA · Part. No. 70132116 01/21 00